

MARKILUX MX-4 - RETRACTABLE ARM AWNING



Euro Full Cassette

- Clean streamlined appearance.
- With a closed box, the fabric, motor, and arms will be effectively protected.



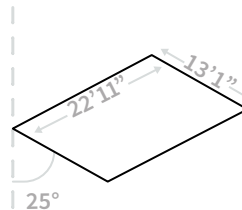
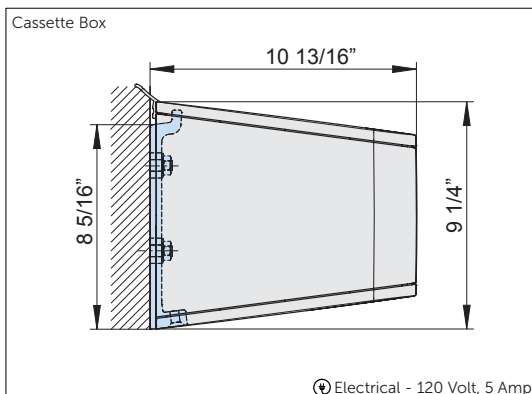
Accessory: Sconce

- Create sensational lighting scenarios based on occasion and mood.
- Designed to match the awning's color and style.



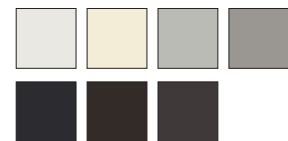
LED Lighting

- Ambient lighting creates atmosphere.
- Enjoy your patio for longer evenings.



Shaded Area:
Width up to 22' 11"
Projection up to 13' 1"
Pitch 5° up to 25°
Coupled

7 Standard Colors



Many Fabric Options



EURO FULL CASSETTE



Key Features:

- Protects fabric from weather damage
- Prevents fabric from fading
- Prevents insect and bird damage
- Awning arms retract inside cassette

The full cassette provides protection against weather elements. Additionally, it can be mounted to the wall, below the ceiling, or to the frames using different installation options.

ACCESSORY: SCONCE



Key Features:

- Perfectly matched to awning design for seamless integration
- Create sensational lighting based on occasion and mood
- Colored light option adds dynamic flair to outdoor space

The MX-4 wall lights match the awning, offering versatile and individualized outdoor illumination, including colored light options for different occasions.

LED LIGHTING



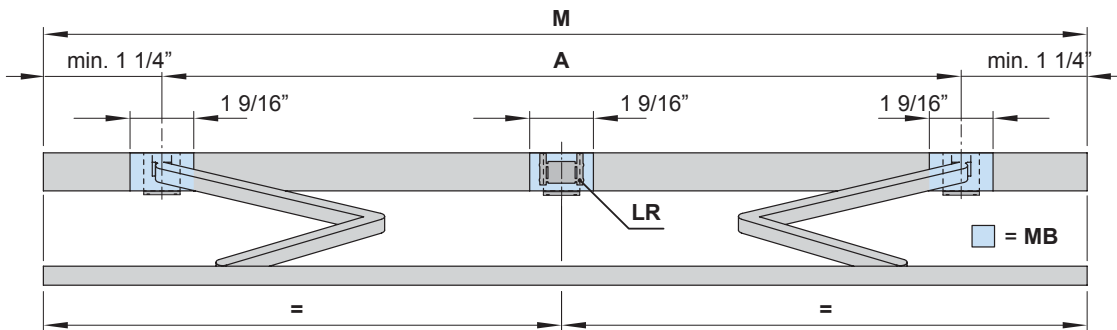
Key Features:

- Dimmable Lighting (remote operation)
- Cassette box LED lights (optional)
- Spot Light LED lights (Applicable in side caps, or drop-out profile)

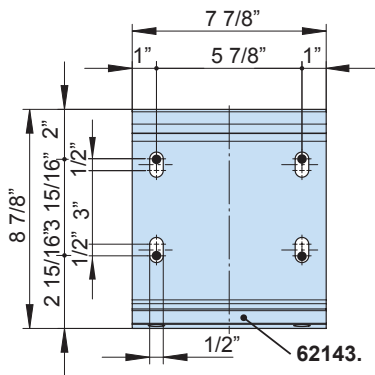
Elevate your evening atmosphere with integrated LED lights on your awning. Opt for either LED spotlights or a LED strip on the cassette box for customizable lighting options.

SPECIFICATIONS

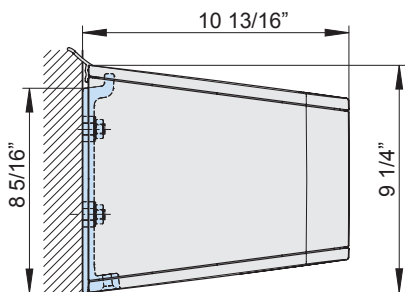
Awning



Bracket



Wall Mount



- M** = order width = awning width
- MB** = bracket fixture range
- LR** = rolltex bearing

⚡ Electrical - 120 Volt, 5 Amp (Placed on left or right end.)

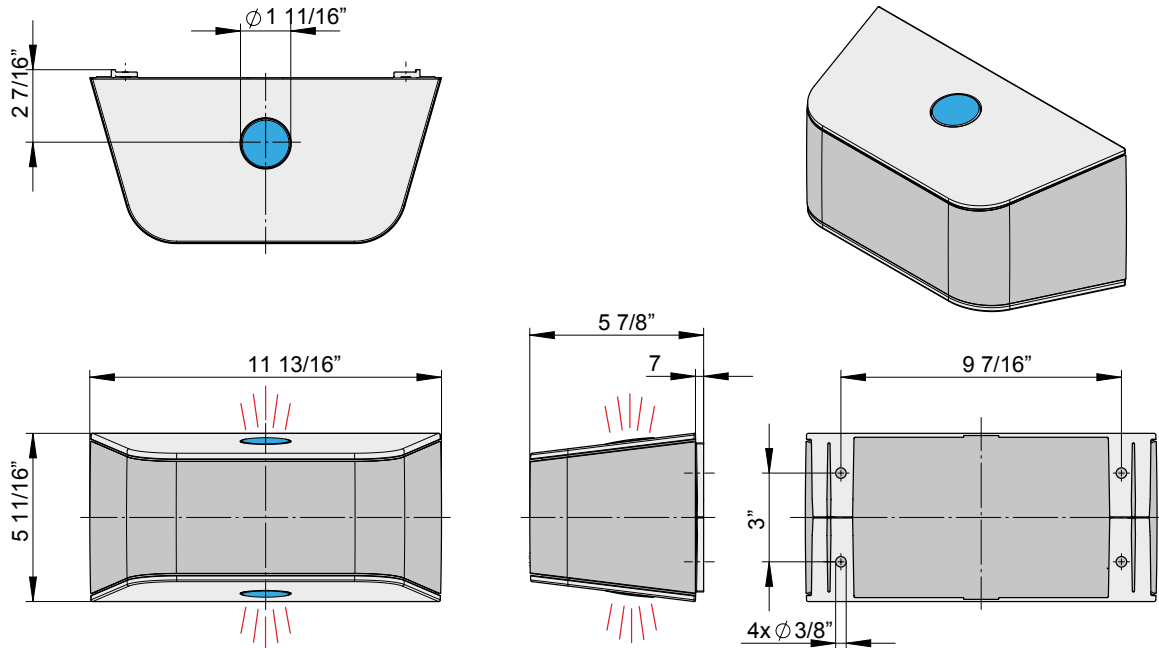
Width

Projection	8' 2"	9' 10"	11' 6"	13' 1"	14' 9"	16' 5"	18'	19' 8"	21' 4"
4'11"									
6'6"									
8'2"									
9'10"									
11'5"									
13'1"									



SPECIFICATIONS

Wall Light



⚡ Operating Voltage 230V/ 50Hz. Power output of one LED spotlight 5W

FINISHING

Frame Color

Color

Color Code



Fabric Color

Color

Color Code



LED Lighting

☐

LED Line Cassette Box

☐

LED Spots in the side caps (top / bottom)

☐

LED Spots drop-out profile



FINISHING: SCONCE (IF APPLICABLE)

Number of Sconce Lights

Count#



Hardware Color

Color

Color Code



Direction of LED Light Beam

☐

Top/Bottom

☐

Top Only

☐

Bottom Only

