


SCREEN SHADE CABLE - RETRACTABLE PATIO SHADE

KEY/LEGEND:

 Optional Add-On Accessory



Shade



20mph



No Snow



No Rain



Open Roll or Hood Cover

- Standard: open roll design
- Add-on: hood cover preserves the fabric roll



Cable Guided Roll

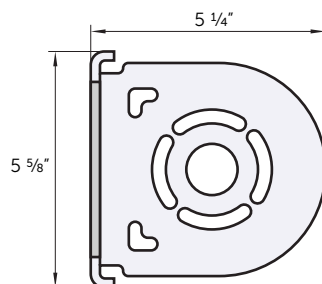
- Even when the sun is low, you can protect your patio and house from the heat.



Solar Powered Motor

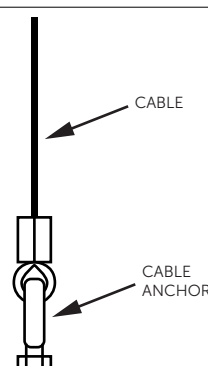
- Re-chargeable battery
- Fabric size limited a 10' x 10'

Cassette Head - Bracket



⚡ Electrical - 120 Volt, 5 Amp

Retractable Cable



5 Standard Colors



Many Fabric Options



THE DENVER SHADE COMPANY

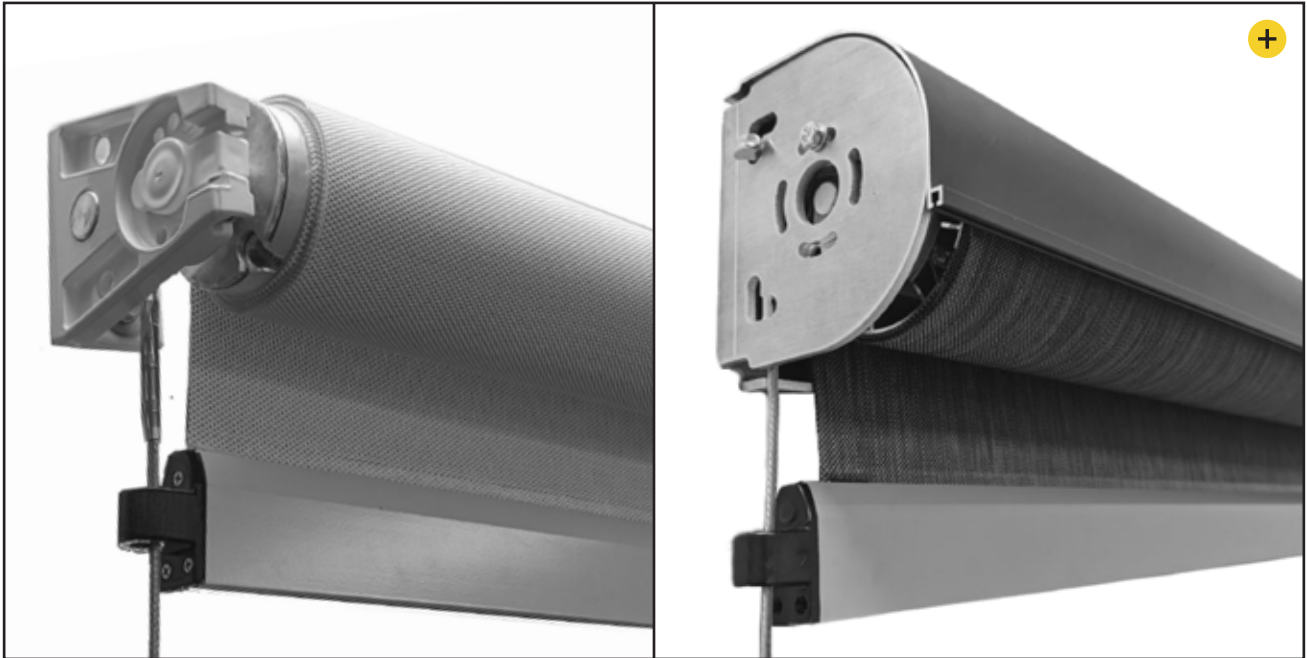
940 Jason Street, Suite 3
Denver, CO 80223

P: 303.517.1994
W: denvershadecompany.com

OPEN ROLL OR HOOD COVER

KEY/LEGEND:

+ Optional Add-On Accessory



Key Features:

- Lower cost option (*Open Roll*)
- Added Fabric Protection (*Hood cover optional add-on accessory*)

Our base cable-guided screen shade system features a open-roll design. For enhanced protection and extended fabric longevity, we recommend adding the optional hood cover accessory.

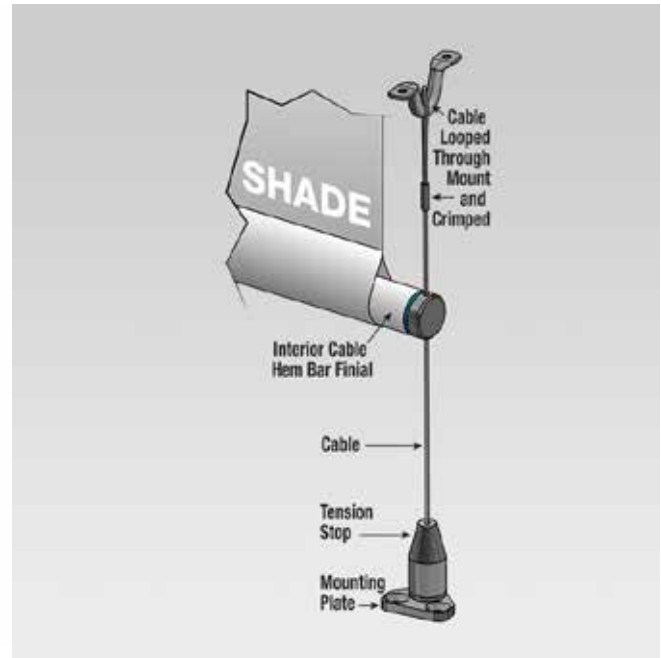


THE DENVER SHADE COMPANY

940 Jason Street, Suite 3
Denver, CO 80223

P: 303.517.1994
W: denvershadecompany.com

CABLE GUIDED ROLL




Key Features:

- Prevents fabric from “swaying” in the wind

With this system, you can rest assured that your patio area will remain clean and comfortable, as it helps prevent fabric swaying during high winds, keeping it in place. In addition, the cable-guided system also acts as a barrier that prevents animals and insects from entering your patio area.

SOLAR POWERED MOTOR - OPTIONAL

KEY/LEGEND:

 Optional Add-On Accessory



Key Features:

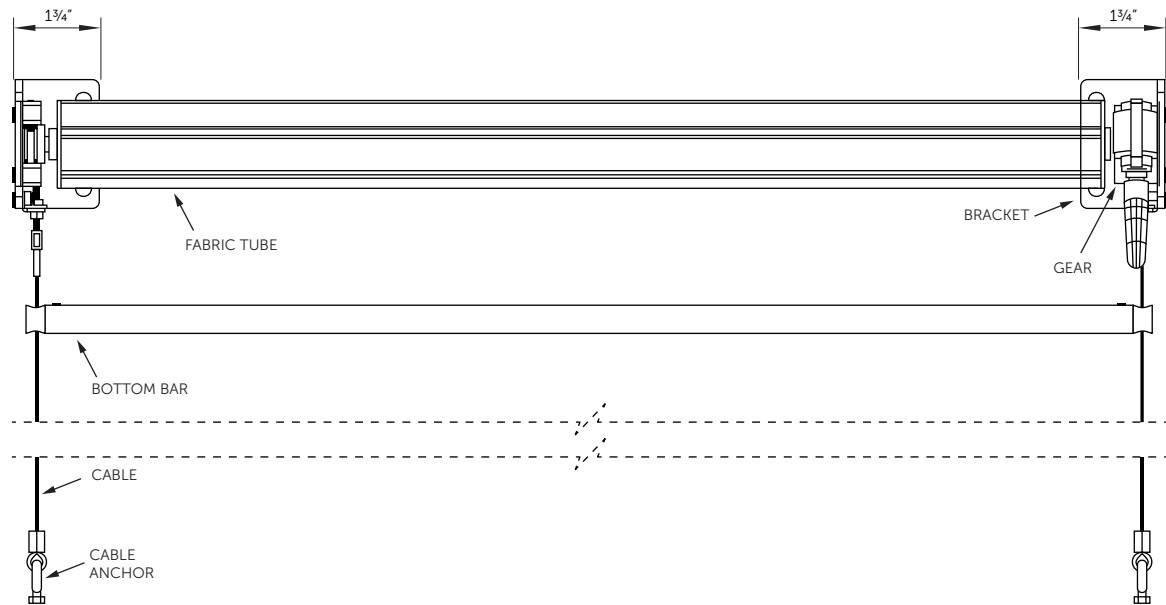
- No electrical needed
- Size limitations to 10' x 10' shade

The solar-powered motor we offer is an excellent eco-friendly option for those looking to reduce their carbon footprint. With this motor, there's no need for electricity, which makes it an energy-efficient and cost-effective solution. Furthermore, installation is fast and hassle-free, and you can start using it immediately. With our solar-powered motor, you can enjoy the benefits of a reliable and sustainable power source while minimizing your impact on the environment.

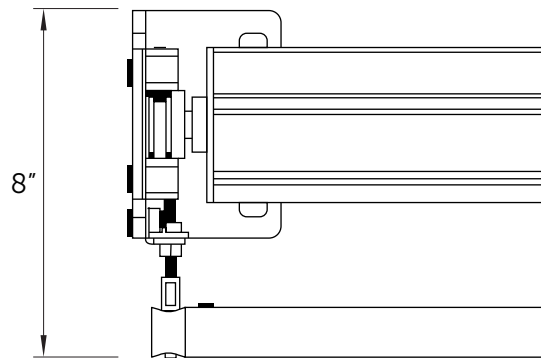


SPECIFICATIONS

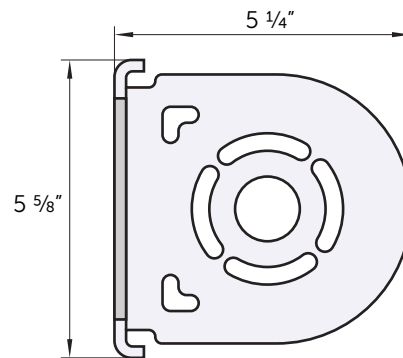
Retractable Cable System



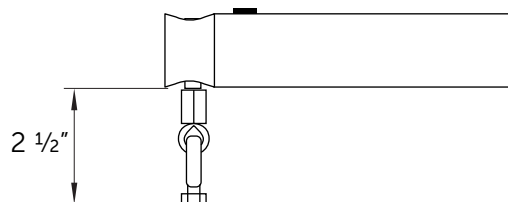
Hembar + Fabric Tube



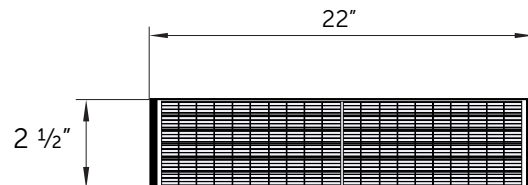
Cassette Box - Bracket



Hembar Gap (Fully Extended)



Solar Panel (Optional)



⚡ Electrical - 120 Volt, 5 Amp (Placed on left or right end.)

OPERATION PARAMETERS



OPERATION

The Customer understands that excessive and extraordinary weather conditions may cause damage to the product, the product may not perform optimally or may not function at all. Care should be taken at all times by the owner. Always retract the shading product when not in use. TDSC does not take any responsibility for personal, or property damage caused by weather or improper use and handling.



OPERATION PARAMETERS



SUN: Cable guided shades are only intended for sunshade.



RAIN: Cable guided shades are not intended for rain protection and should not be used in the rain.



WIND: Wind capacity is 20 mph. High winds may damage the shade.



SNOW: Cable guided shades are not intended to block snow. Snow or extreme weather of any kind may damage the product. Cable guided shades should be retracted during all snowfall.



TEMPERATURE: *Do not operate the shade in temperatures below 32 degrees. Motors may not work in temperatures below 32 degrees. Fabric is more brittle in colder conditions and thus subject to damage.*




HAIL: Hail damage is not covered by warranty.



OBSTRUCTIONS: Objects such as sticks, branches and debris may impede travel and can damage or stain the fabric. Always use caution.

FINISHING

KEY/LEGEND:

 Optional Add-On Accessory

Frame Color

☐

White

☐

Bronze

☐

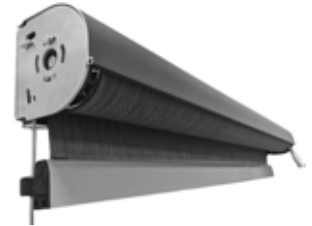
Ivory

☐

Black

☐

Beige



Fabric Color

Color

Color Code



System Hardware

☐

Open Roll

☐

Hood Cover



Solar Powered Motor

☐

Yes

☐

No



THE DENVER SHADE COMPANY

940 Jason Street, Suite 3
Denver, CO 80223

P: 303.517.1994
W: denvershadecompany.com