

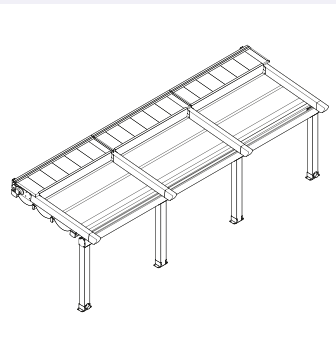
SOL SHADE ES - RETRACTABLE PATIO COVER

(WALL MOUNTED FOLDING SYSTEM FOR X-LARGE SIZED SPACES)



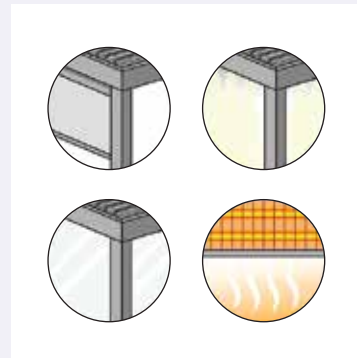
Retractable Folding Fabric Canopy System

- Zippered Side Channels
- Higher wind tolerance to awning.
- Integrated water drainage.



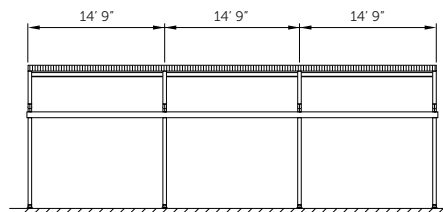
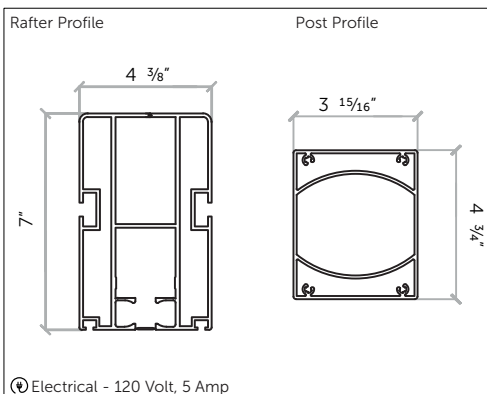
Modular Design

- Combine multiple units in a row.
- 14' 9" max width each section, 29' 6" max projection.



Accessory Packages

- Lighting, screen shades, heaters, and glass.



Shaded Area:
Width 8' up to 22' 11"
 (Modular with in 14' 9" increments)

Projection up to 29' 6"
 (*Any system can be combines for wider systems.)

Custom RAL Colors



SIOEN Fabric Options



RETRACTABLE FOLDING FABRIC CANOPY SYSTEM



Key Features:

- Remote-controlled folding shade style patio cover
- Electric motor for easy operation
- Fabric extends and tightens to block sun and rain

The folding shade style patio cover features a remote-controlled electric motor for effortless operation. The fabric extends outward and securely tightens, providing sun and rain protection.

MODULAR DESIGN



Key Features:

- Combine multiple units in a row.
- 14'9" max width each section, 29' 6" projection

The Modular Key Features of our product include the ability to combine multiple units in a row, allowing for seamless expansion and customization according to your specific needs. These features ensure a flexible and efficient solution that can adapt to various spaces and requirements.

ACCESSORY PACKAGES AVAILABLE



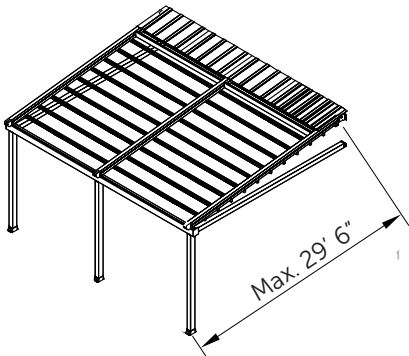
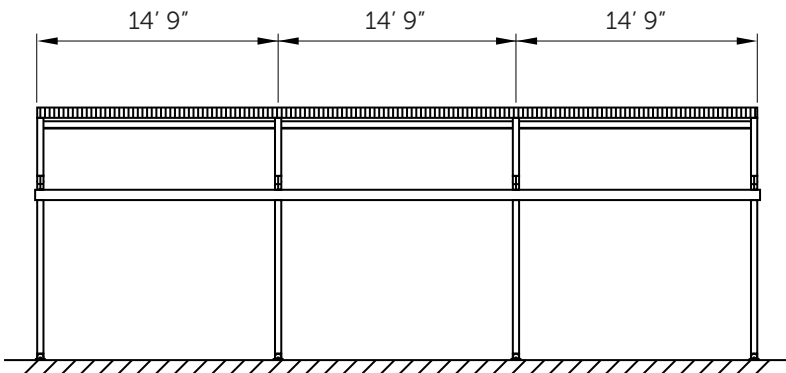
Key Features:

- LED Lighting
- Heaters
- Drop Screens or glass enclosure

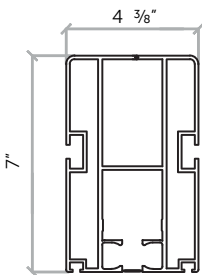
We offer a variety of accessory packages to enhance your experience, including lighting, screen shades, and heaters. These packages provide additional functionality and convenience to complement your space.

SPECIFICATIONS

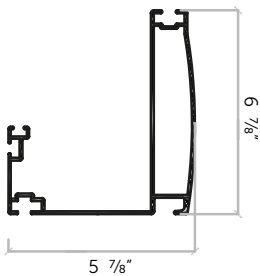
Canopy Features



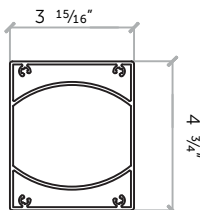
Rafter Profile



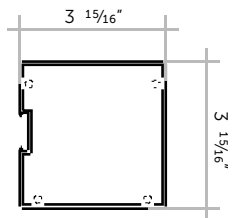
Gutter Profile



Post Profile



Glass Profile



⚡ Electrical - 120 Volt, 5 Amp (Placed on left or right end.)

Width

| Proj. | 10' - 14' 9" (2 Rails) | 15' - 22' 11" (3 Rails) |
|---------|------------------------|-------------------------|
| 16' 4" | | |
| 19' 8" | | |
| 22' 11" | | |
| 26' 3" | | |
| 29' 6" | | |



FINISHING

Hardware Color

Color

Color Code



Fabric Color

Color

Color Code

