

GOELST - MOTORIZED CURTAIN RAIL SYSTEM



Electronically Operated

- Bottom-up, cable-guided shades designed for unique window shapes, up to 16 feet wide.



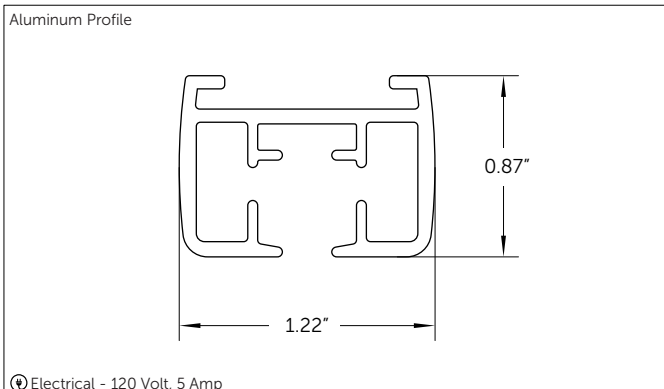
Luxurious & Sturdy

- Special fully retracting window shades that feature an angle, slant, or A-frame.



Ultra-quiet Performance

- With near-silent operation (<44 dBA at 3 ft), Goelst lets you manage daylight without disrupting the environment.



Many Fabric Options

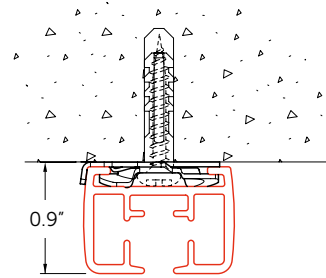
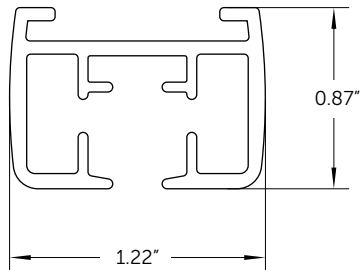


Hardware Finishes

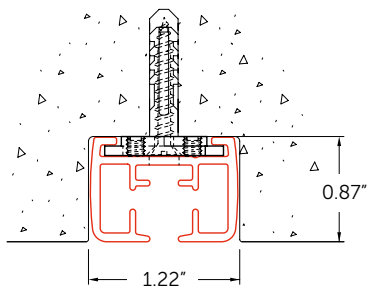


GOELST - MOTORIZED CURTAIN RAIL SPECIFICATIONS

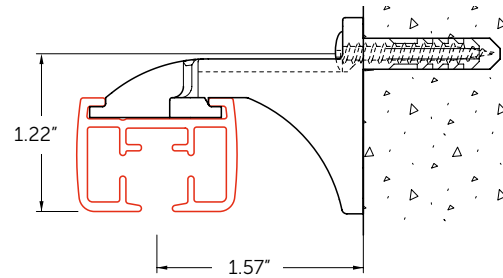
Mounting



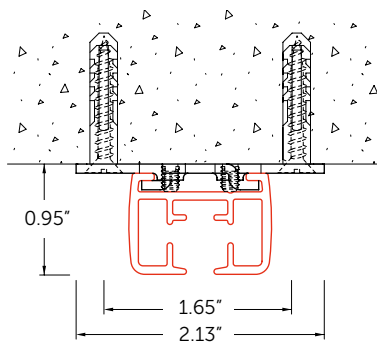
Ceiling mounting with fixing clamp 6050:
allow space for tightening the clamp



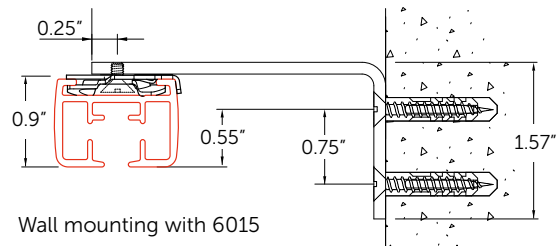
Concealed mounting on or in the ceiling with bracket 6055-2000.
For curved rails, use the profile as manufactured to determine the arc.



Wall mounting with bracket 6051

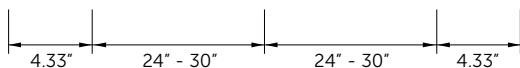


Ceiling mounting with bracket 6055-1000



Wall mounting with 6015

Mounting guideline



The distance between the brackets can vary depending on the following factors: the mounting surface (wood, concrete or plaster), the weight of the curtains and the curtain fabric production method, the specific application and the intensity of the use of the system. General advice: with the curtains open, place additional brackets where the pleats bunch together. Also place additional brackets before and after bends.



FINISHING

Hardware Color

Color

Color Code



Fabric Color

Color

Color Code

